

- Use your phone to scan the QR code OR go to <https://join.iclicker.com/EJYE>
- No account required!
- Perfect for one-off events
  - Orientations
  - Faculty Senate Meetings
  - Department Meetings
  - Student Org Meetings

## Join our iClicker Event!



# Back to School with iClicker

Fall 2024



- Use your phone to scan the QR code OR go to <https://join.iclicker.com/EJYE>
- No account required!
- Perfect for one-off events
  - Orientations
  - Faculty Senate Meetings
  - Department Meetings
  - Student Org Meetings

## Join our iClicker Event!



# Back-to-School with iClicker

## Webinar Agenda



**Introductions**



**Quick iClicker Overview & New Feature  
Showcase with Natalie Dougall**



**Justin Shaffer**



**Adriana Bryant**



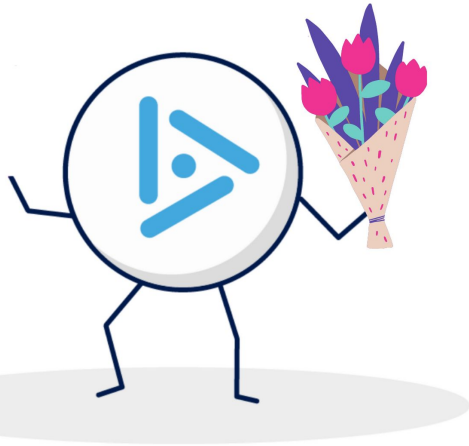
**Question and Answer**

# Which iClicker features have you used in the past?

*Select all that apply.*

- A. iClicker AI Question Creator
- B. iClicker Attendance
- C. iClicker Polling
- D. I've recommended iClicker Study Tools to students
- E. none of these

# Introducing iClicker Polling



- Instructors ask students questions and students respond in real time
- Use iClicker with **whatever tools you're already using**
- Students respond with their **mobile devices** (and remotes still work!)
- **No need to preload** questions or answers
- Achieve includes **Instructor Activity Guides**-- fully-developed in-class activities that include iClicker questions

# How are you feeling about the fall term right now?




## iClicker: Formula/Symbol Question Type

- The new iClicker Formula/Symbol question type enables students to answer with equations, mathematical expressions, symbols, and Greek letters.
- This feature provides instructors, especially those in STEM fields, with the ability to ask more complex polling questions.

9:41 Question 1  
Short Answer

What is the chemical equation for rust?



Short Answer

$O_2 + Fe + H_2O \rightarrow Fe_2O_3 \cdot H_2O$


122

Symbols ^  $X^0$   $X_\theta$

Equation Greek

= ≠ ≈ ± ° √ ∛ ≤

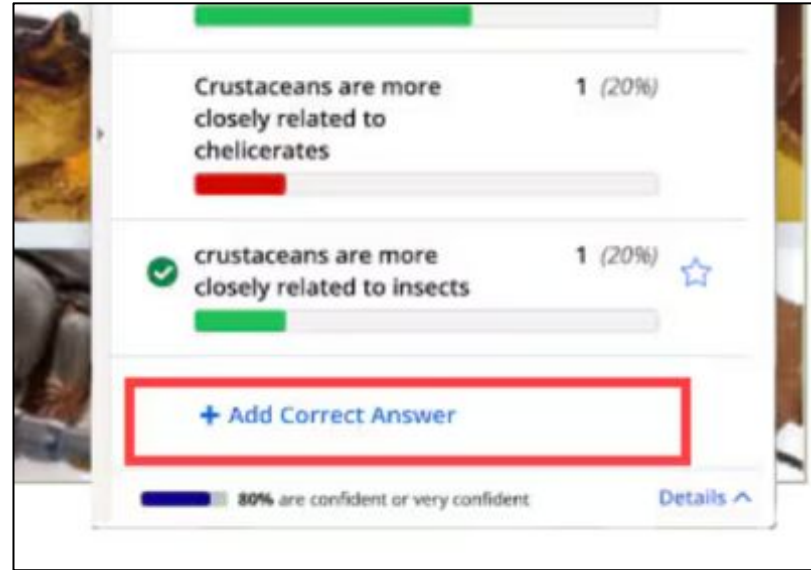
≥ ↔ ← → ⇌ ⇌ ⇌



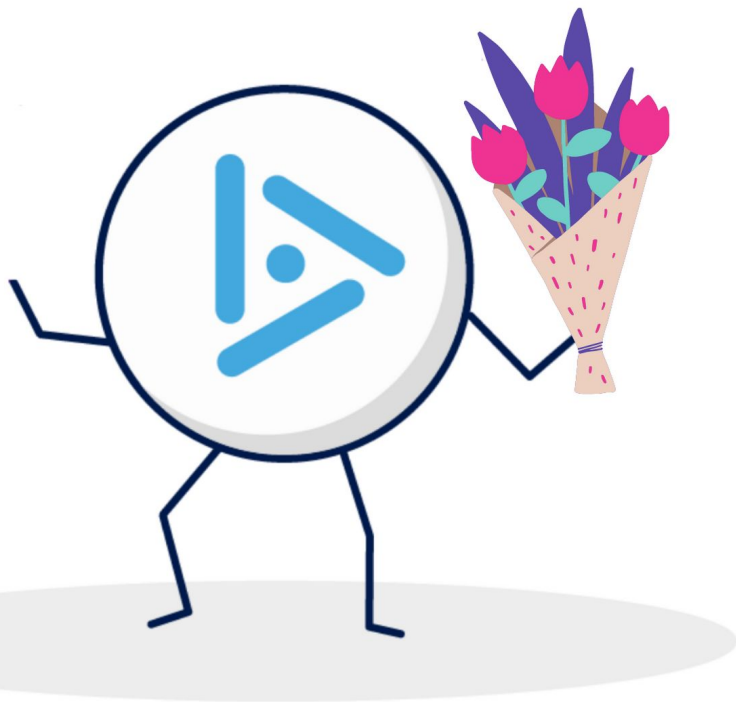


# Additional iClicker Features for 2024!

- **Short Answer** Polling questions now have an option to make responses case sensitive.
- **Short Answer and Numeric** questions offer the ability to grade by using the +Add Correct Answer option as an alternative to clicking the student responses.
  - This option replaces the previous “Other Response” input that was used to indicate that none of the student responses are correct.



# Additional iClicker Features for 2024!



- A new course setting for Polling allows instructors to **skip the screen capture window selection dialog** and image preview popup.
- **Confidence Mode** - Are students answering confidently or are they taking an educated guess? Turn Confidence Mode on your questions!
- **Anonymous Mode** - Ask sensitive questions that students might not feel comfortable answering if their response could be traced to their identity.

## Affordability Reminders for Fall 2024




If your institution does not have a site license, remember these tips to help with student affordability:

- iClicker is included with Achieve at no additional cost to students.
- New iClicker remote purchases include a 5-year iClicker student app subscription.
- No remote needed? Students should set up their accounts via the [web app](#) for the most affordable option.

# NEW AI tool to elevate in-class assessments



iClicker's AI Question Creator swiftly generates unique, unsearchable questions for *polls, quizzes, assignments* and more. Tailored to your teaching style and course needs, these questions provides a more authentic assessment of students' comprehension of the course content.

-  Create up to 50 original, dynamic questions in minutes
-  Deploy new questions instantly
-  Use active learning strategies to gauge students' true understanding in real-time

# What kinds of clicker questions can you write?

- Multiple choice
- Multiple Answer
- Numeric
- Target
- Short Answer
  - Text entry
  - Multiple Select
  - Matching
  - Ordering / Ranking
- Predict, click, depict!

These are the five available question types with iClicker

These are variations that you can do!



Thanks to Adrienne Williams!

## Multiple choice

There are many components and processes going on inside a refrigerator, but the overall effect is that the temperature inside stays constant. How would you best describe the overall process of a refrigerator?

A – adiabatic

B – isobaric

C – isochoric

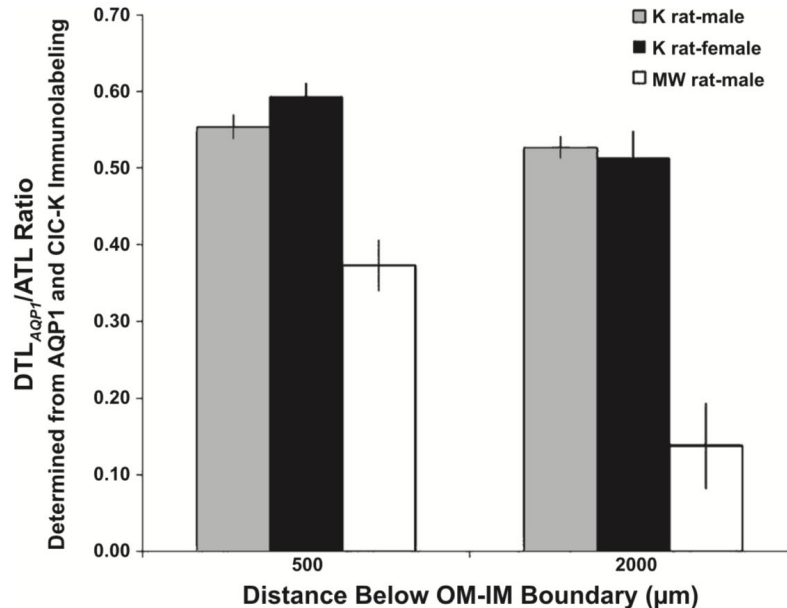
D – isothermal



# Multiple answer

# Anatomy and Physiology

DTL –  
descending thin  
limb of loop of  
Henle  
ATL – ascending  
thin limb of  
loop of Henle  
AQP1 –  
aquaporin  
channel



Click in as  
many  
answers as  
you need!

What can you conclude from these data?

A – There are more aquaporin channels in K-rat DTLs (per ATLs) than in MW rats

B – Kangaroo rats can make more concentrated urine than MW rats

C – Osmolarity in the kangaroo rat filtrate will be lower than that of the MW rat

D – There is less water reabsorption by the kangaroo rat DTL than the MW rat DTL

Numeric

What is the mass (kg) of air contained in a 8.0 m x 6.0 m x 3.0 m room if the pressure is 12.7 psia and the temperature is 75 °C?

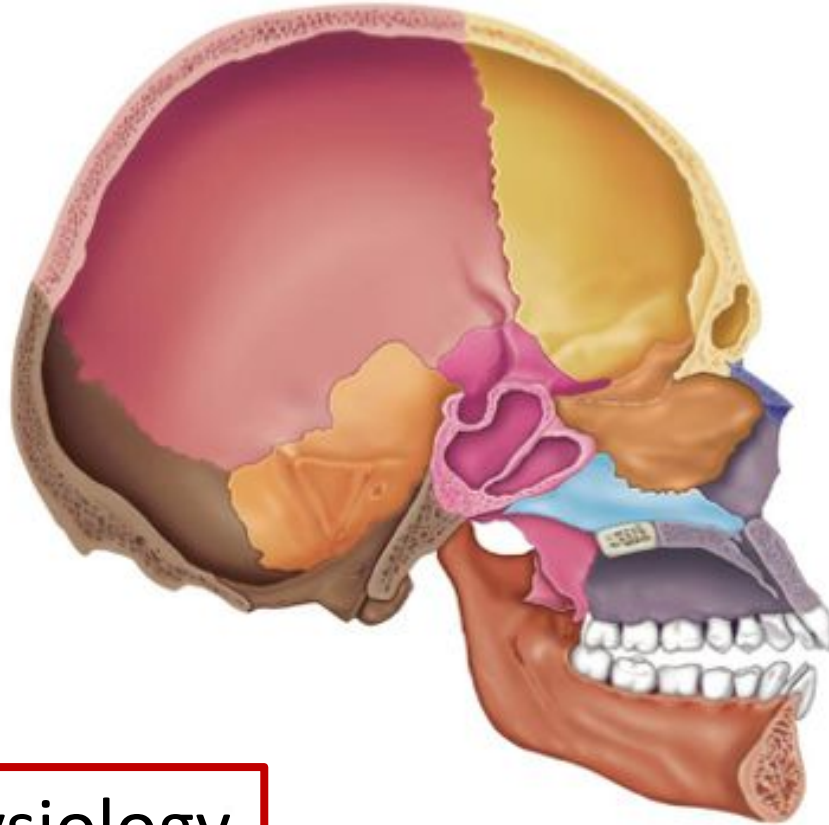
Click in your answer with three sig figs!

Material and Energy Balances



Target

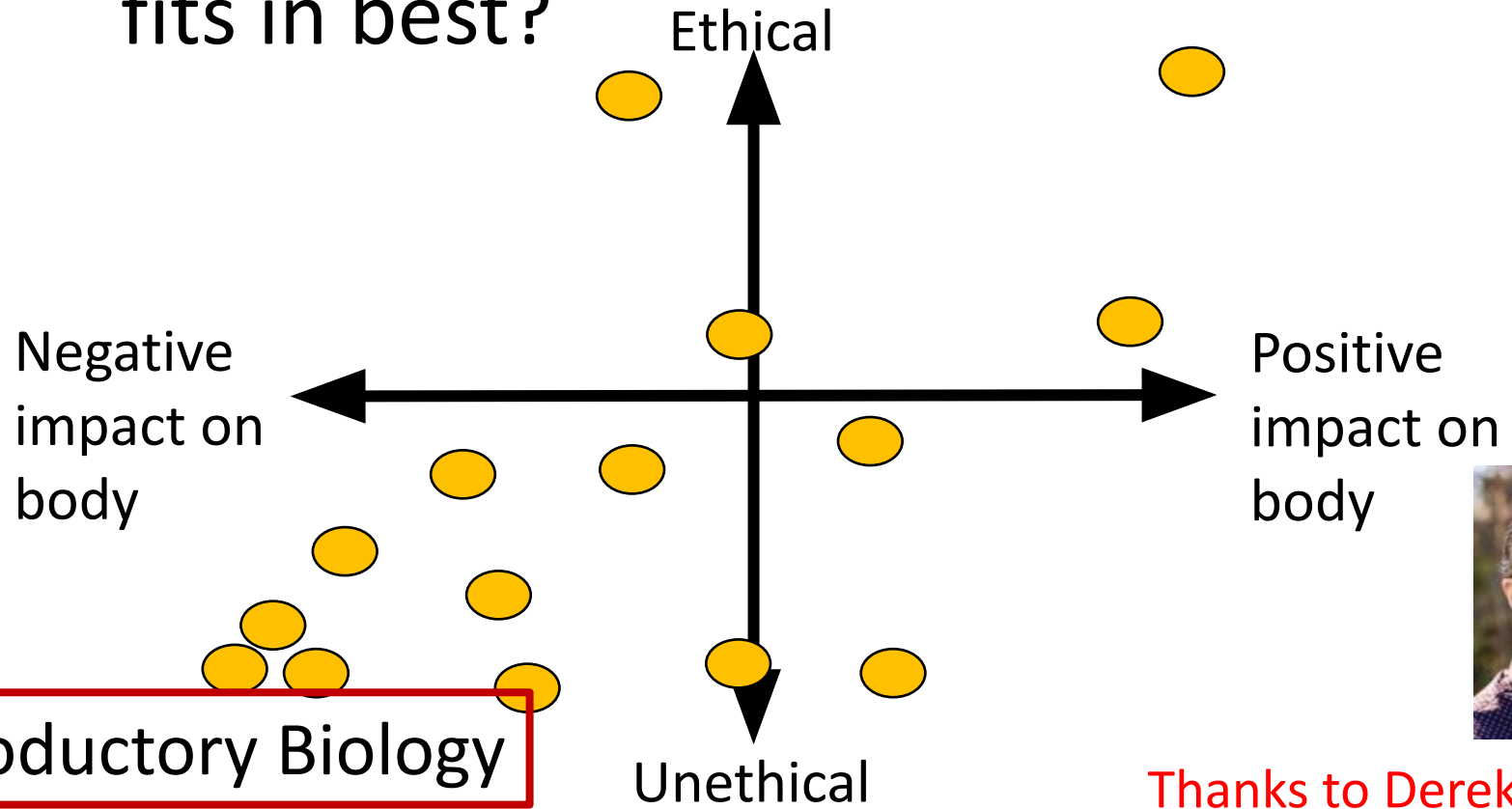
Which bone is the occipital bone?



Anatomy and Physiology

Target

# Where do you think the use of performance enhancing drugs in sports fits in best?



Introductory Biology



Thanks to Derek Bruff!

## Short Answer – Text Entry

What action will this muscle produce on the ankle joint when it contracts?

Type in your one-word answer!

Flexion



## Short Answer – Multiple Select

Select whether these statements are TRUE or FALSE in that they would increase a patient's ejection fraction.

A – Administer a drug that increases preload **T**

B – Administer a drug (e.g. isoproterenol) that increases calcium flux into myocardial cells **T**

C – Administer a drug (e.g. propranolol) that blocks sympathetic innervation **F**

D – Administer a drug that decreases afterload **T**

Enter all three responses in a single answer (e.g. "FTF")

## Short Answer – Matching

### Energy terminology

- D • Isobaric
- F • Isochoric
- A • Isothermal
- H • Sign if heat enters a system
- B • Sign if work done by system
- C • Closed system
- E • Open system
- G • Adiabatic

Introductory Thermodynamics

Match the terms on the left with the descriptions on the right! Enter all of your answers as a single answer from top to bottom

- A. No change in temperature
- B. Negative
- C. Only heat and work cross boundary
- D. No change in pressure
- E. Mass, heat and work cross boundary
- F. No change in volume (rigid)
- G. No heat loss/gain
- H. Positive

## Short Answer – Ordering/Ranking

Erythropoietin (EPO) is a protein hormone that stimulates red blood cell production. EPO normally has many monosaccharides attached to it. What is the correct order of structures that EPO will pass through to be secreted from a cell? **Not all structures may be used in your answer and some may be used more than once**

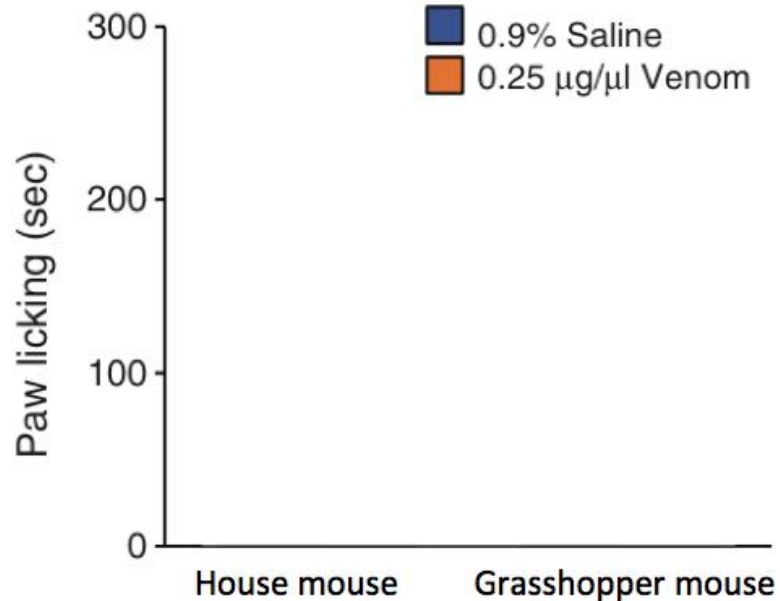
- A – Rough ER
- B – Smooth ER
- C – Nuclear envelope
- D – Golgi apparatus
- E – Transport vesicle

**AEDE**

# Predict, Click, Depict!

When mice feel pain on a part of their body, they lick that part  
Experiment: Researchers injected bark scorpion venom into the hind paws of the common house mouse and the southern grasshopper mouse; As a control, they injected 0.9% saline solution. Then they measured how long they licked their paws afterwards.

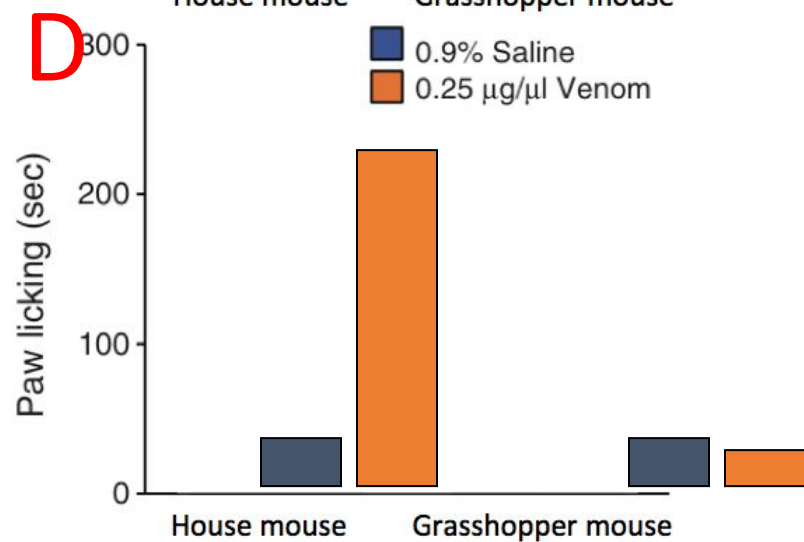
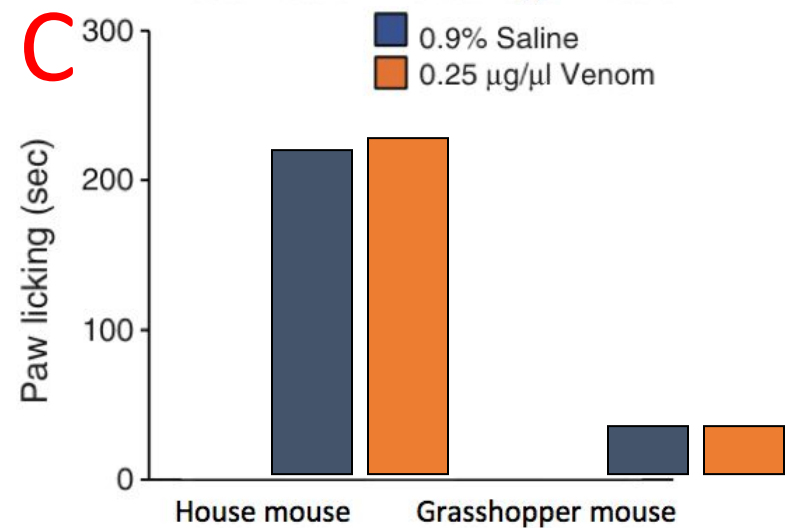
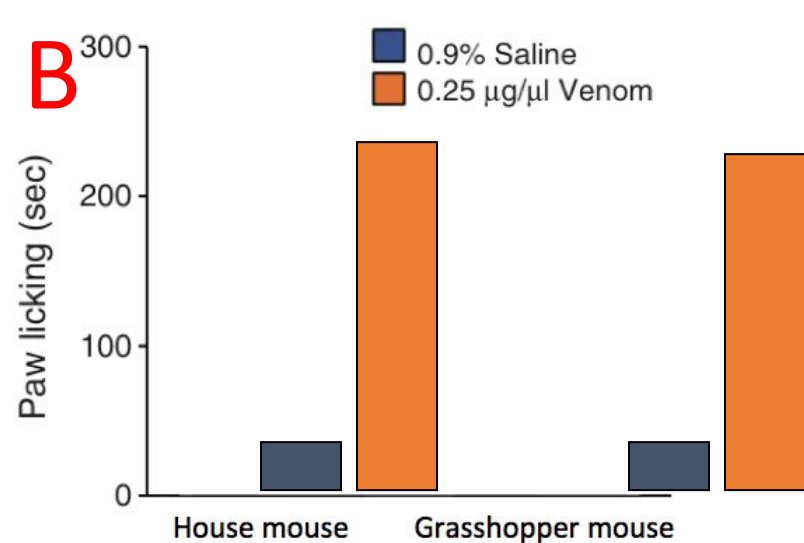
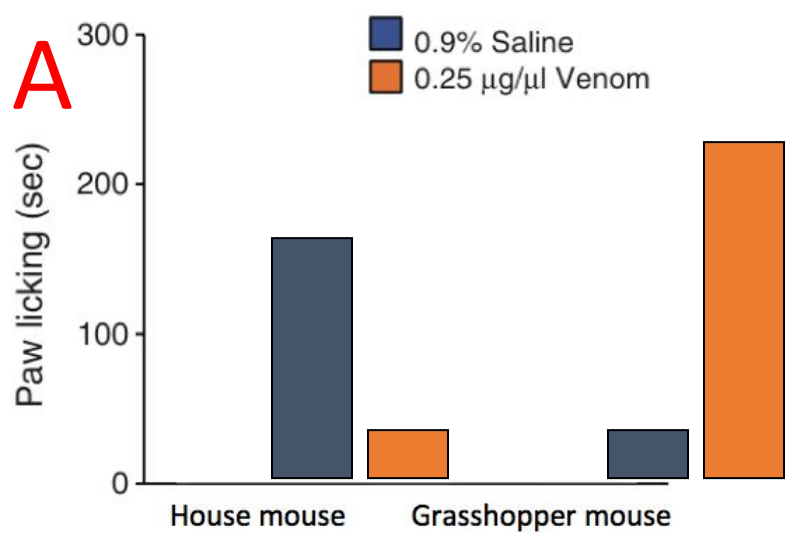
What data do you think they observed?



House Mouse

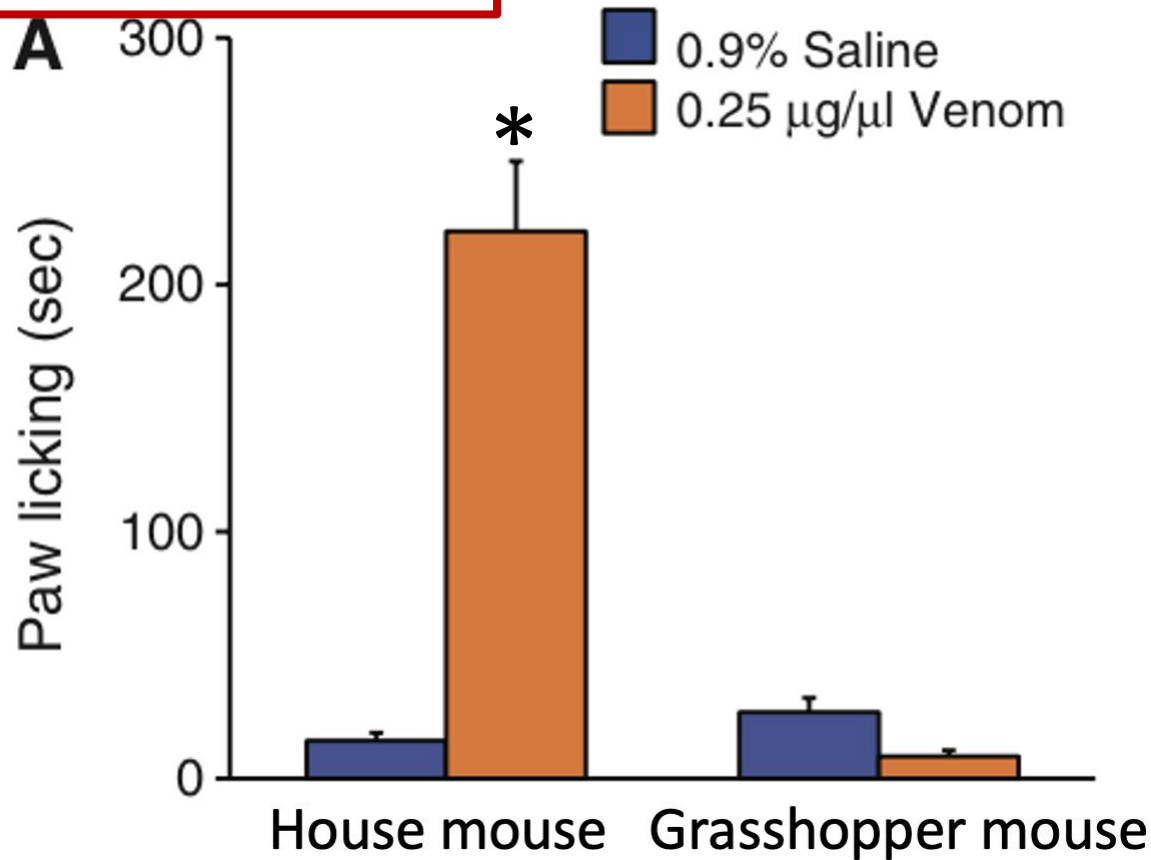


Southern Grasshopper Mouse





# Predict, Click, Depict!



How is this possible?

How can you explain these results?

# iClickers in the Classroom

**Adriana Bryant**



# Getting Started


join.iClicker.com/KXOU/instructions

Important | Lonestar | Educational Resour... | Jazzercise | LoneStar Student R... | All Bookmarks

iClicker

ENGL 1301

Go to  
join.iClicker.com  
**KXOU**






Share this join link with students

[Copy](#)

**Students will be shown a code to use to join.**

Students can link their iClickers to the gradebook in Achieve. (There will be a yellow banner at the top for the students to click to link)

<b>JURNEE NELSON</b> <i>jurnelson@my.lonestar.edu</i>	
<b>Janala Pugh</b> <i>janpugh@my.lonestar.edu</i>	
<b><u>Marisol Rosales-Vargas</u></b> <i>mrosalesvargas@my.lonestar.edu</i>	
<b>Natalie Rubio</b> <i>natalrubio@my.lonestar.edu</i>	
<b>Alyssa Salazar</b> <i>alysssalazar@my.lonestar.edu</i>	

\*Use the short response option for this question.

# Polling Option

**Question 1) How easy was it to get set up with iClickers?**

**Question 2) What questions do you have about iClickers in general and for this course?**

# Assignment Option

🕒 Class History

📊 Gradebook

📖 Assignments

📝 Quizzes

👥 People

📅 Attendance

⚙️ Settings

📱 Download App

🛠️ Support

🗣️ Give Feedback



This course has been archived. [Unarchive](#)

Assignments

Introduction Questions ▾

13/15 Submissions | Due Sep 11, 2023 11:59 PM | ⋮

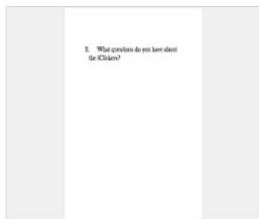
Questions (2)

Grades



Question 1  
*Short Answer*

50.00 points possible



Question 2  
*Short Answer*

50.00 points possible



## Uses of iClickers:

- Create Assignments in iClickers that correspond with my lectures for my online students to complete. Or create Assignments in iClickers for students to complete in class or after class as a summative assessment of topics.
- Create groups in iClickers (I usually use their Writing Community Groups) and have them answer multiple choice questions as groups in class using the groups polling option in iClickers.
- iClickers with Instructional Activity Guides:
  - Create a quiz in iClickers ahead of time for easy use and preparation. This is good if you want to use it as a more formal assessment.
  - Use the poll option to use these questions as a low stake practice and completion option for the students.



Example: iClickers to Teach  
Visual/Oral Rhetorical Analysis

\*Use the short response option for this question.

# Question 1

**How are we influenced by visuals and audio in our everyday lives? Provide an example.**

\*Use the short response option for this question.

Provide words to help describe what you see/feel



Question 1

Answer, 11:11 AM

Question 2

Answer, 11:19 AM

100% confident or very confident

Question 3

Answer, 11:21 AM

100% confident or very confident

Question 2 ...

Short Answer



Case Sensitive:

No



Response	Count	Points
ants working their way around the sweets, they didn't mind the candy and had a goal to go for	1 (8%)	0.00
ants, dirty, avoiding, sweet	1 (8%)	0.00
crawlers, nasty, sticky, union	1 (8%)	0.00
I feel widely uncomfortable with the way the lollipop is just there and the ants aren't taking it with them.	1 (8%)	0.00
Just because more people are doing it doesn't make it the right decision. the ants are just following the person in front of them not lookin	1 (8%)	0.00

\*Use the target option for this question.

Place a dot where your eyes are drawn to in this advertisement.



## Question - Grade Responses

Cancel

Save

Select the region you want to mark as correct.



# Benefits of iClickers

- Promotes engagement in the classroom.
- Serves as quick assessment throughout presentation of new concepts.
- Serves as quick assessment of prior knowledge of concepts.
- Promotes retention of the materials as students are able to interact with the information.
- Provides the opportunity for low stake and high-stake assessment options (poll or quiz).
- You can utilize them in both online and in-personal courses.

# Q&A



# How are you feeling about the fall term right now?



